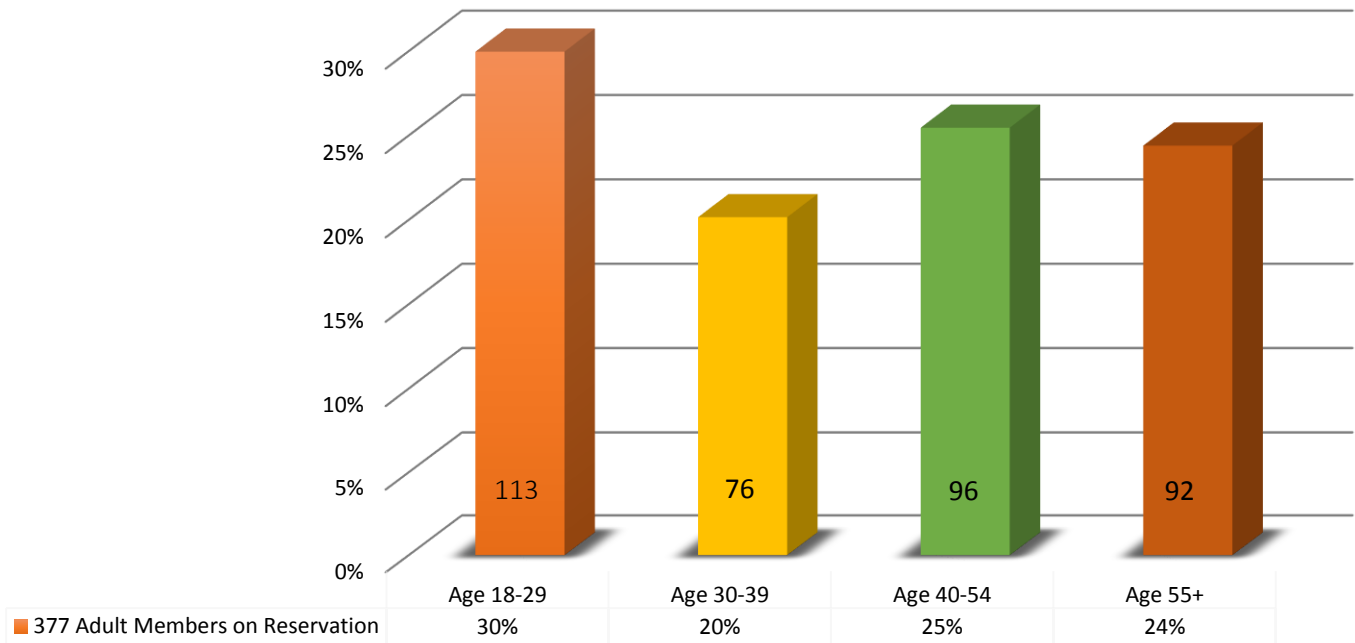
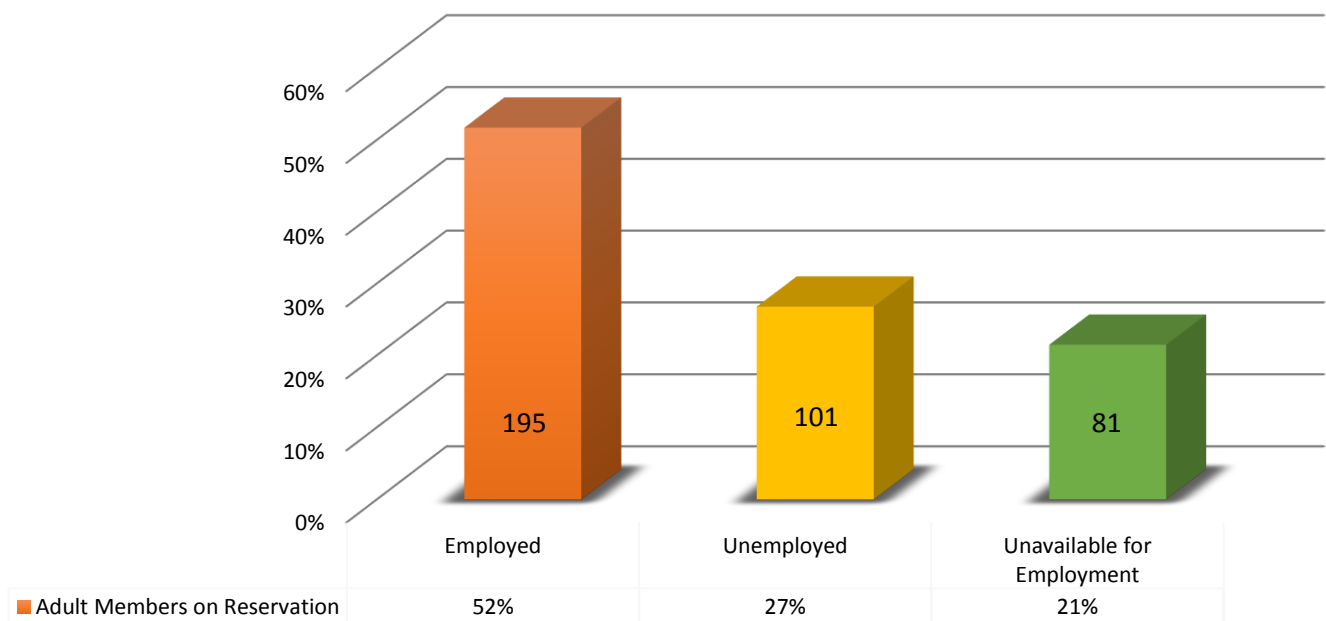


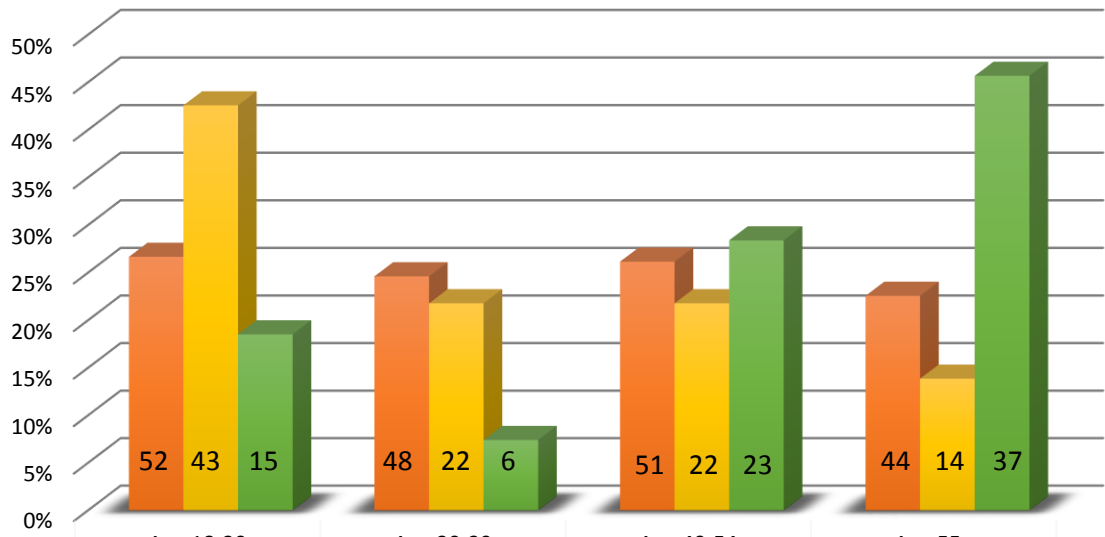
Adult Tribal Members on Reservation Breakdown of 377 Adult Tribal Members by Age December 2019



Employment Status Breakdown of 377 Adult Tribal Members

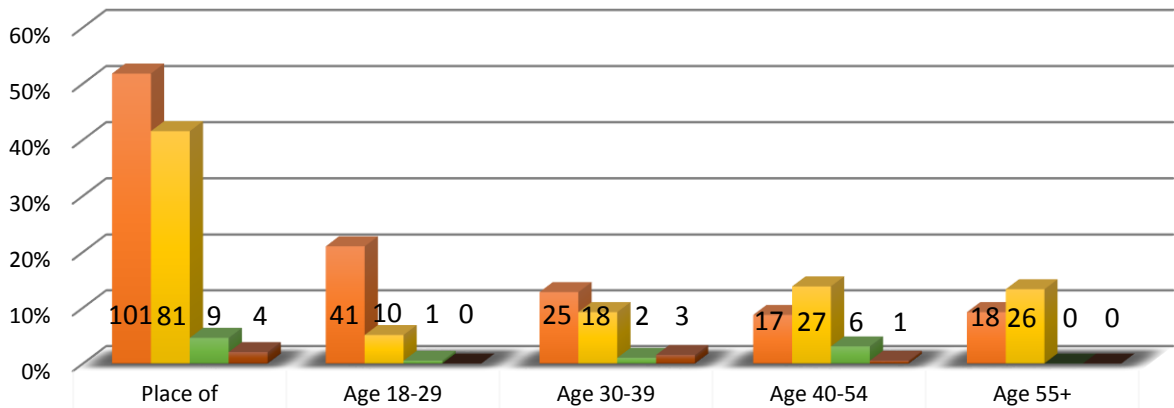


Employment Status by Age Breakdown of 377 Adult Tribal Members



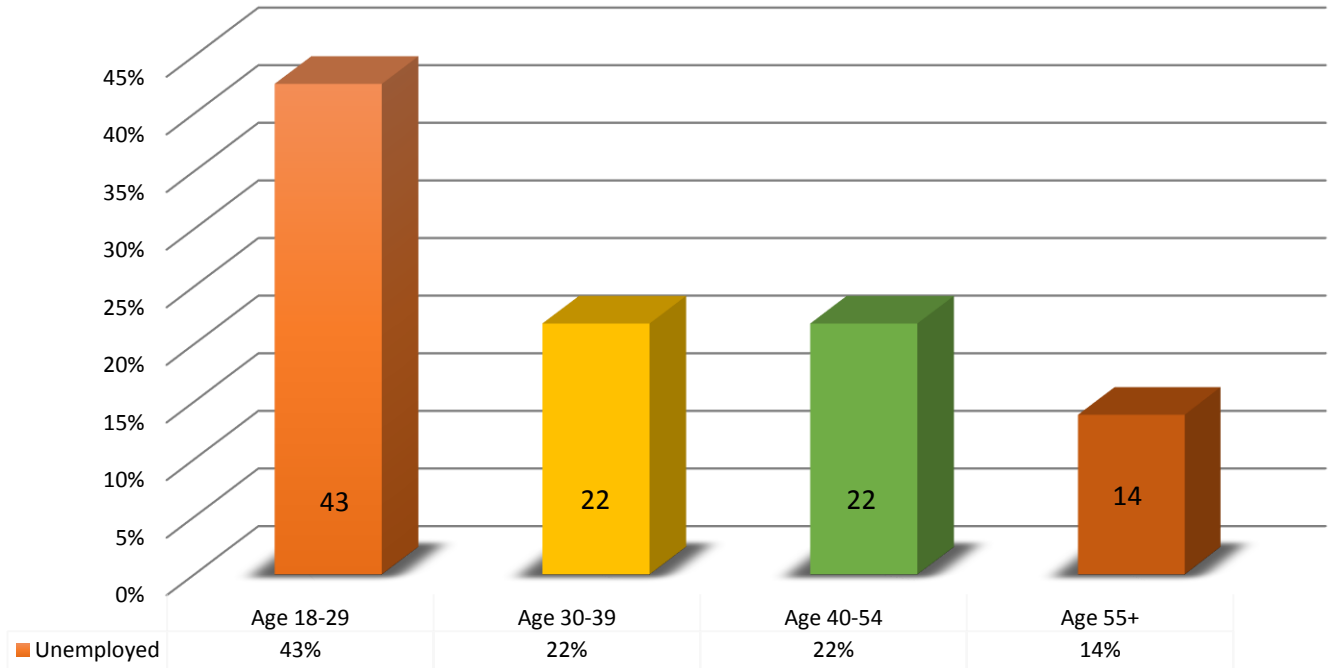
| | Age 18-29 | Age 30-39 | Age 40-54 | Age 55+ |
|----------------------------|-----------|-----------|-----------|---------|
| Employed | 27% | 25% | 26% | 23% |
| Unemployed | 43% | 22% | 22% | 14% |
| Unavailable for Employment | 19% | 7% | 28% | 46% |

Place of Employment Breakdown of 195 Employed Adult Tribal Members



| Place of Employment as a Whole | Age 18-29 | Age 30-39 | Age 40-54 | Age 55+ |
|--------------------------------|-----------|-----------|-----------|---------|
| Casino | 21% | 13% | 9% | 9% |
| Community | 5% | 9% | 14% | 13% |
| Employed Off Rez | 1% | 1% | 3% | 0% |
| Self Employed | 0% | 2% | 1% | 0% |

Unemployment Status by Age Breakdown of 101 Unemployed Adult Tribal Members



Unavailable for Employment by Reason Breakdown of 81 Employed Adult Tribal Members

